

HOTMARKER

HOTMARKER M-3E

HAND-HELD TYPE MARKING MACHINE



CABLES / WIRES



TUBES



MARKER LABELS
*Optional "M52-17" required.

CTK CORPORATION

HOTMARKER M-3E

QUICK-CHANGE CHARACTER WHEEL SYSTEM



①	②	③	④	⑤	⑥	⑦
A	K	R	1	1	1	1
B	L	S	2	2	2	2
C	M	T	3	3	3	3
D	N	U	4	4	4	4
E	O	V	5	5	5	5
F	P	W	6	6	6	6
G	Q	X	7	7	7	7
H	+	Y	8	8	8	8
I	-	Z	9	9	9	9
J	/	.	0	0	0	0
*	*	*	*	*	*	*

※:Blanks

11 facets per wheel
(10 characters + blank)

Standard character
wheel arrangement

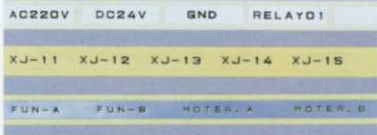
SIZE (HxWmm)	FACET	ORIENTATION	APPLICATIONS
2.4 x 2.4	CURVED(4.5R)	HORIZONTAL	Cables / Wires
1.8 x 1.8	CURVED(2.0R)	HORIZONTAL	
1.8 x 0.9	CURVED(2.0R)	VERTICAL	
2.4 x 2.4	FLAT	HORIZONTAL	Tubes Marker Labels Cable ties
1.8 x 1.8	FLAT	HORIZONTAL	
1.8 x 0.9	FLAT	VERTICAL	

Just rotate wheels to select characters.
Up to 7-digit marking possible.
Wheel arrangement easily changeable.

MARKED SAMPLES



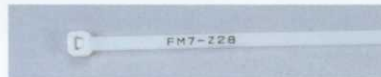
Heat shrink tubes



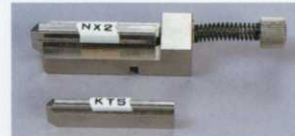
Marker Labels



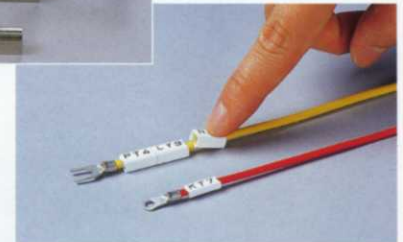
Wires



Cable ties



MBS-10



Clip-on cable markers

*Optional "MBS-10" required for marking.

M-3E STANDARD SET



Accessories included in the standard set:
*Character wheel: 1 set (pre-mounted on main unit)
Tube guide (I.D. 5mm): 1 pce.

SPECIFICATIONS

VOLTAGE	Input AC220-240V 50Hz Output AC10V (Max.)
HEATER	22W / 150°C (Approx. Max.)
TEMPERATURE	4-step control
TOOL LENGTH	About 280mm (or 11", main unit only)
TOOL WEIGHT	About 850g (or 1.9 lb, main unit only)
DIMENSIONS	375W x 285D x 120Hmm (carrying case)

OPTIONAL ACCESSORIES



M52-17
For Marker Labels



MBS-10
For clip-on cable markers



TUBE GUIDE
Special sizes I.D. 4, 6, 7, 8 and 10.5mm also available.



PRECAUTIONS TO ENSURE SAFETY



Before using the machine, be sure to read the instruction manuals and understand the proper usage of the machine.

The information contained in this leaflet, specifications and external appearance of products are subject to change without notice.

CE

HOTMARKER

MANUFACTURER

CTK CORPORATION

1-7-17, Kandaizumi-cho,
Chiyoda-ku, Tokyo 101-0024 Japan

Tel: (03)3861-5610

Fax: (03)3861-5880

http://www.hotmarker.co.jp

HAND-HELD TYPE MARKING MACHINE

HOTMARKER MODEL M-3N



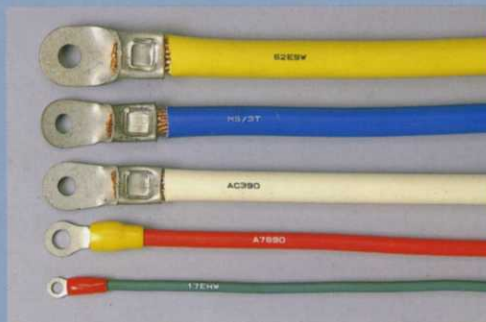
**COMPACT AND LIGHT WEIGHT
PORTABLE FOR JOBSITE SERVICING**

**JUST SQUEEZE! NO SPECIAL SKILLS REQUIRED.
DIRECT PRINTINGS POSSIBLE ON
WIRES, TUBES, LABELS AND TIE BANDS.**

MARKED SAMPLES

WIRES

Direct printings possible.



TUBES

Printings on heat shrink tubes also possible.



TIE BANDS

Specially designed work holder necessary.

Labels can be printed on with optional Marker Label holder.

MARKER LABELS

+24VOLT 55JF HTE4 RJE7 GPF2 DUY1

AC220V 38620 RB25DE DD5A 5 AE91 F117A

AC-100V AC-101V AC-102V AC-103V AC-104V AC-105V

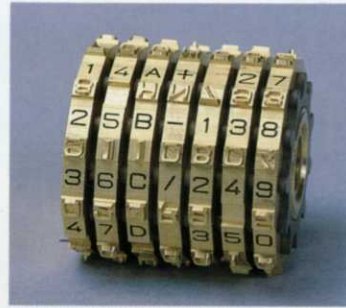
EASY TO USE! MODEL M-3N

HAND-HELD TYPE

QUICK-CHANGE CHARACTER WHEEL SYSTEM

JUST ROTATE WHEELS TO SELECT CHARACTERS FOR MARKING. UP TO 7-DIGIT MARKING POSSIBLE.

For wider marking application of M-3N, wheels for three different size (2.4×2.4 mm, 1.8×1.8mm, 1.8×0.9mm vertical) and two facet (curved face for round shaped wires and flat face for tubes, Marker Labels, etc.) characters are available at option.

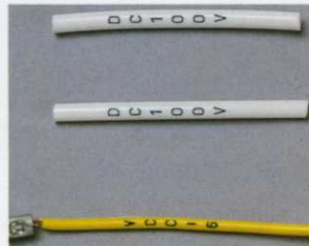


CHARACTER SIZE (STANDARD) 2.4×2.4mm

CHARACTER SIZE 1.8×1.8mm



CHARACTER SIZE 1.8×0.9mm



CHARACTER SIZE 4.0×2.0mm



STANDARD CHARACTER WHEEL ARRANGEMENT

A	K	R	1	1	1	1
B	L	S	2	2	2	2
C	M	T	3	3	3	3
D	N	U	4	4	4	4
E	O	V	5	5	5	5
F	P	W	6	6	6	6
G	Q	X	7	7	7	7
H	+	Y	8	8	8	8
I	-	Z	9	9	9	9
J	/	.	0	0	0	0
*	*	*	*	*	*	*

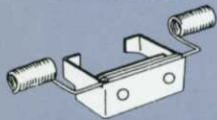
※Blanks

Special character arrangement other than the above (i.e. capital & lower case alphabet letters, special character sizes) also available as special. Wheel arrangement easily changeable.

M-3N STANDARD SET

MAIN UNIT 1 SET
 TRANSFORMER ASSEMBLY 1 SET
 TUBE GUIDE (I.D. 5mm) 1 PCE
 CHARACTER WHEEL (STANDARD 2.4×2.4MM, 4.5R, PRE-MOUNTED ON THE MAIN UNIT) 1 SET

TUBE GUIDE



Special size I.D. 4, 6, 7, 8 and 10.5mm also available at option.



SPECIFICATION

VOLTAGE • INPUT 100, 110, 115, 220, 230, OR 240V AC
 OUTPUT 10V AC(Max.)
 HEATER • 22W/150°C(approx., Max.)
 WATTAGE
 TEMPERATURE • STEPLESSLY ADJUSTABLE
 TOOL LENGTH • ABOUT 280mm(OR 11", MAIN UNIT ONLY)
 TOOL WEIGHT • ABOUT 850g(OR 1.87 lb, MAIN UNIT ONLY)
 MEASUREMENT • 375×285×120mm(CARRYING CASE)

LABEL PRINTINGS ALSO POSSIBLE!!

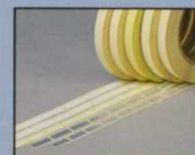
MARKER LABEL

Adhesive label to identify electrical parts, distribution panels, enclosures, etc.

With M-3N and optional Marker Label holder M52-17, just squeeze, and then your Marker Labels can be printed for identification as you need.



M52-17



MARKER LABEL



STOCK NO.	COLOR	SIZE OF EACH PIECE (H)×(W) mm	QUANTITY PER ROLL	MARKABLE DIGIT
TW-17	white	6×17	1,550pcs	4
TW-20	white	6×20	1,350	5
TW-23	white	6×23	1,200	6
TW-26	white	6×26	1,000	7
TS-17	silver	6×17	1,550	4
TS-20	silver	6×20	1,350	5
TS-23	silver	6×23	1,200	6
TS-26	silver	6×26	1,000	7
TC-17	transparent	6×17	1,550	4
TC-20	transparent	6×20	1,350	5
TC-23	transparent	6×23	1,200	6
TC-26	transparent	6×26	1,000	7
LW-100	white	6×30M		
LS-100	silver	6×30M		
LC-100	transparent	6×30M		
			long size (without cutting)	

MANUFACTURER

CTK CORPORATION

1-7-17, kandaizumi-cho
 Chiyoda-ku, Tokyo 101-0024, Japan
 Tel: (03)3861-5610
 Fax: (03)3861-5880